



MAMORAY™ HDR-C Plus Film

Enhanced contrast and
skin line visualization

- Enhanced contrast and visualization of skin line, while maintaining exposure latitude
- Split Emulsion Layer technology provides three separate emulsion layers
- Cubic Crystal technology minimizes noise on the image caused by inherent graininess
- Cubic Crystals develop rapidly, improving the consistency of your processing
- The silver crystal structure produces a comfortable neutral image tint

> **MAMORAY HDR-C PLUS IS AGFA'S NEWEST HIGH QUALITY MAMMOGRAPHY FILM. IT PROVIDES HIGH CONTRAST IMAGES WITH AN ENHANCED SKIN LINE VISUALIZATION.**

> **MAMORAY HDR-C PLUS PROVIDES THE BEST RESULTS IN COMBINATION WITH MAMORAY SCREENS & CASSETTES.**

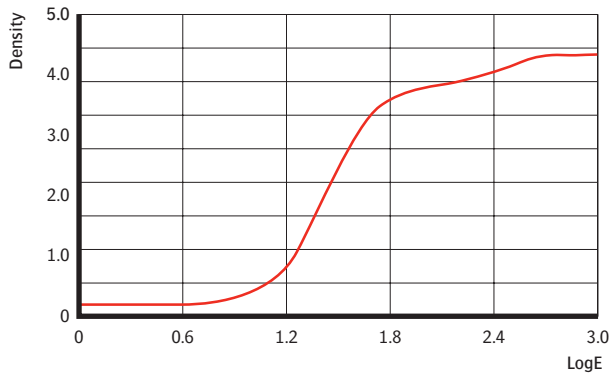
Two emulsion technologies working together

MAMORAY HDR-C Plus is a single-sided orthochromatic mammography film that is part of the Agfa HealthCare film/screen system for mammography. The film uses both Split Emulsion Layer (S.E.L.) and the Cubic Crystal technologies.

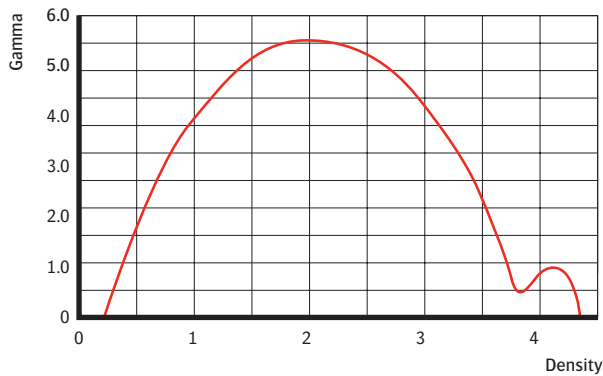
Agfa's Split Emulsion Layer technology provides the MAMORAY HDR-C Plus film with three emulsion layers on one side of the film. Each layer consists of monodispersed Cubic Crystals of identical size.

Film sensitometry

Sensitometric curve

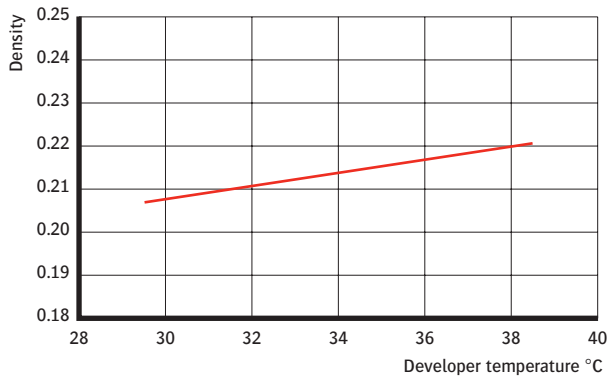


Gamma curve

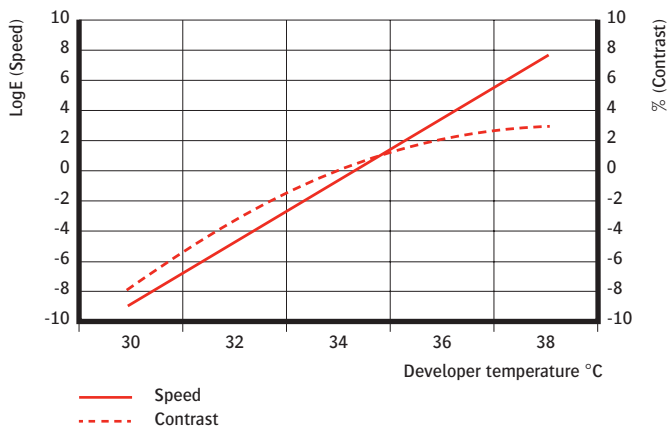


Dynamic curves

Base & Fog



Speed & Contrast



— Speed
- - - Contrast

Because the latent image is formed on the edge of the crystals, the developing chemicals (G138i) do not have to penetrate into the crystals. As a result the developing process is fast and allows less scope for variations. In this way Agfa's Cubic Crystal technology ensures extremely consistent mammography images.

High contrast

The mammography system offered by Agfa today combines several technologies which results in many advantages and in an unmatched mammography image quality. The increased gradient ensures improved visualization of clinical significant information in both the glandular and retroglandular tissue.

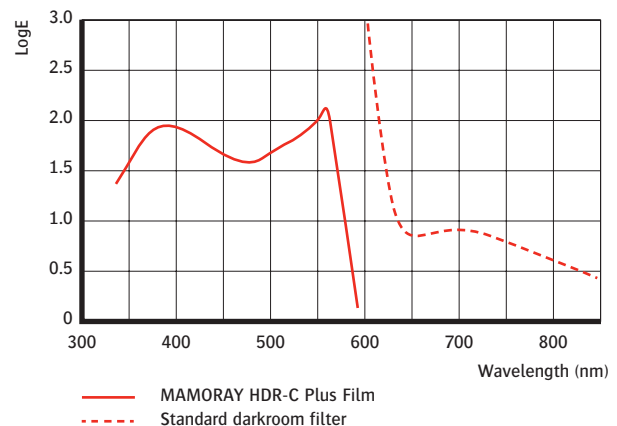
Dynamic range

A particular strong point is the system's high dynamic range. For every image, the contrast is optimized for each density range. Equally, the system provides excellent visualization of details which are further enhanced by the masking effect of high maximum density in the non-image area adjacent to the skin-line.

Consistent and easy to use

Agfa's Cubic Crystal technology provides highly consistent processing results and optimal image quality. Normal fluctuations in the processing conditions hardly have any effect on the sensitometry of the film. The silver crystal structure produces a comfortable neutral image tint that helps to perceive tiny low contrast details.

Darkroom sensitivity

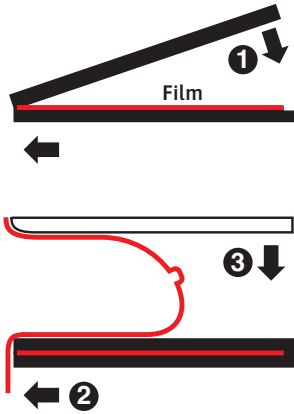


— MAMORAY HDR-C Plus Film
- - - Standard darkroom filter

These results were obtained using RP-processing on a MAMORAY Compact E.O.S., G138i/G334i, at 34 °C/95 °F.

MAMORAY HDR-C Plus

Cassettes & Screens



MAMORAY Cassettes: Lightweight durability

MAMORAY cassettes are made of Novodur, an extremely tough and light plastic. The cassettes are easy to handle, are long lasting and shockproof.

The design of the MAMORAY cassette ensures that the edge of screen and film are in close contact with the thoracic edge of the cassette. This way, the film draws closer to the thorax on closing the cassette and the distance between the edges of the film and the thorax side of the cassette can be limited to less than 2 mm.

MAMORAY cassettes are equipped with a pneumatic foam, which makes the extraction of air so fast that you can use the cassette almost immediately after closing it.

MAMORAY Screens:

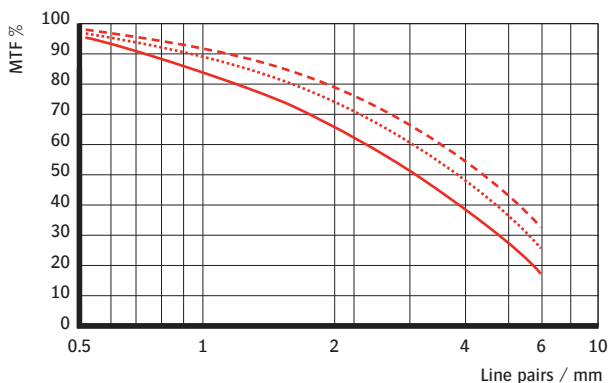
Images with outstanding sharpness at low dose

MAMORAY HD, HD-S and Detail R intensifying screens - which all contain green-emitting rare earth phosphors ($Gd_2O_2S:Tb$) - are an integral part of the Agfa film/screen system for mammography.

Combine MAMORAY HD and HD-S screens with MAMORAY HDR-C Plus film. This will result in a superb image quality and in a reduction of the dose by up to 40% in comparison to the HD-screen. Even at low doses, outstanding diagnostic information is provided.

The MAMORAY Detail R intensifying screens are designed for further exposure and noise reduction.

Modulation transfer function

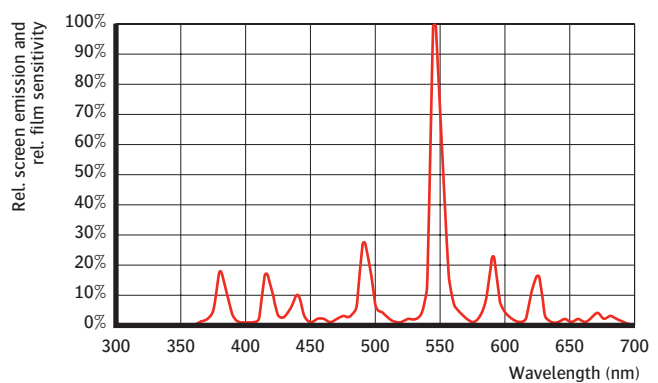


MAMORAY HDR-C Plus film with MAMORAY screen

- MAMORAY HD
- MAMORAY HD-S
- MAMORAY Detail R

This curve is the result of measurements that give a degree of the "intrinsic sharpness" of the film/screen system. This is a partial measurement of the total image quality of the film/screen system as perceived on the viewing box. The total image quality depends on other factors besides the "intrinsic sharpness". The principal factors are: graininess, noise, film contrast and aesthetic factors such as film density, image tint, etc.

Spectral Emission curve



TECHNICAL SPECIFICATIONS

Processing conditions MAMORAY HDR-C Plus film

| | Up to 75 films/day 34-35 °C (94-95 °F) | 75-150 films/day 34-35 °C (94-95 °F) | >150 films/day 34-35 °C (94-95 °F) |
|-------------------------|---|---|---------------------------------------|
| Temperature | 34-35 °C (94-95 °F) | 34-35 °C (94-95 °F) | 34-35 °C (94-95 °F) |
| Processing cycle | RP/90s/120s | RP/90s/120s | RP/90s/120s |
| Developer replenishment | 800 ml/m ² | 600 ml/m ² | 400 ml/m ² |
| Fixer replenishment | 600 ml/m ² | 600 ml/m ² | 600 ml/m ² |
| Starter amount | 25 ml/l | 25 ml/l | 25 ml/l |

| | Irregular | Regular | Irregular | Regular | Irregular | Regular |
|-----------------------------|-----------|---------|-----------|---------|-----------|---------|
| Jog-cycle ¹ | auto | auto | auto | auto | off | off |
| Start-up cycle ² | on | off | on | off | on | off |

¹ Available on all E.O.S. processing equipment. There are 3 settings: on, off and auto. On means that there is always a minimum amount of developer added to the developer tank. Auto means that the jog cycle is switched on, which indicates that less than 3 m² (about 75 films) was processed the day before.

² Available on all E.O.S. processing equipment. Every time the processor is started, one fourth of the developer is replaced.

Available MAMORAY Cassette sizes

| Cassette type | ID window exposed areas | Available sizes |
|---------------|-------------------------|--------------------------|
| European | EU 62.4 x 16 mm | 18 x 24 cm 24 x 30 cm |
| US | US 62.4 x 26 mm | 18 x 24 cm 24 x 30 cm |

MAMORAY intensifying screen combinations

| Film | Screen | Rel. speed |
|------------|------------------|------------|
| MAMORAY | MAMORAY HD | 100 |
| HDR-C Plus | MAMORAY HD-S | 140 |
| | MAMORAY Detail R | 170 |

MAMORAY HDR-C PLUS FILM

Storage conditions

- Temperature: 4-25 °C/39-77 °F
- Relative humidity: between 30-50%

Operating conditions

- Temperature: 15-25 °C/60-77 °F
- Relative humidity: between 30-50%
- Shield the film from heat and all penetrating radiation, which might fog the film.

Recommended chemicals

- G138i developer and G334i fixer are strongly recommended

MAMORAY CASSETTES

Safety compliance

- DIN 6832 part 2 and 3, ANSI PH 1.49, IEC 406

MAMORAY SCREENS

Recommendations

- Protect MAMORAY screens from humidity
- Do not expose to sunlight or ultraviolet rays, that may result in discoloration or warping.
- Immediately remove dust and stains from the screens

Cleaning

- Only use Agfa screen cleaner to clean the MAMORAY screens
- Moisten a piece of gauze with the cleaner
- Gently wipe the screen surface
- After cleaning, dry the screen using a clean piece of gauze
- Leave the cassette open for drying before reloading it with film

Agfa, the Agfa rhombus, Point of Knowledge, See More, Do More and MAMORAY are trademarks of Agfa-Gevaert N.V., Belgium or its affiliates. All other trademarks are held by their respective owners and are used in an editorial fashion with no intention of infringement.

The data in this publication are for illustration purposes only and do not necessarily represent standards or specifications which must be met by Agfa. All information contained herein is intended for guidance purposes only, and characteristics of the products described in this publication can be changed at any time without notice.

Products may not be available for your local area. Please contact your local sales representative for availability information.

Agfa diligently strives to provide as accurate information as possible, but shall not be responsible for any typographical error.

Agfa-Gevaert N.V. has been awarded the ISO 9001 certificate by Lloyd's Register Quality Assurance. The business group HealthCare has been awarded the ISO 13485 certificate for design, development and production of imaging and communication solutions for healthcare applications.

© Copyright 2005 Agfa-Gevaert N.V.
All rights reserved



Printed in Belgium
Published by Agfa-Gevaert N.V.
B-2640 Mortsel - Belgium
NF2BJ GB 00200508

AGFA 

| see more | do more |